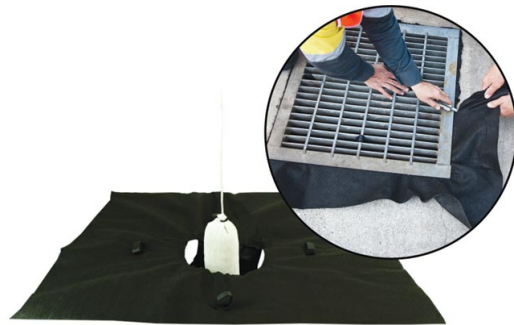


Drain Filter with Absorbent

SKU: DFB13600

Drain Filters, crafted from polypropylene non-woven geotextile fabric, are installed beneath drain grates to capture contaminants, debris, and sediments, preventing their entry into stormwater drains. Easy to install without concrete cutting or drilling, they can be trimmed to size post-installation.



Drain Filters are positioned beneath the drain grate to secure the filter, effectively capturing contaminants, debris, and sediments from entering stormwater drains. These filters utilize a polypropylene non-woven geotextile fabric for filtration and a polypropylene absorbent boom for hydrocarbon absorption. They are easily installed without the need for concrete cutting or drilling, fitting stormwater drains up to 1300mm x 1300mm x 600mm and adaptable for smaller drains. Functioning similarly to gross pollutant traps, the Drain Filter allows runoff water into the pit, where it swirls within the filter. Particles larger than the fabric's pore size are trapped within the geotextile drain filter, while hydrocarbons are absorbed by the hydrophobic boom located beneath the stormwater grate. The Drain Filter with Absorbent Sock is suitable for carparks, delivery docks, service areas, construction sites, and industrial plants.

Product Applications:

- Carparks
- Delivery docks
- Service areas
- Industrial plants

Product Features:

Efficiently captures contaminants, debris, and sediments Hydrocarbons absorbed by the hydrophobic boom Simple installation without concrete cutting or drilling Geotextile material adaptable for smaller drains

Specification

density:	260GSM
colour:	Black
pore-size:	90 micron
flow-rate:	80L/m2/sec
material:	Geotextile
absorbent-length:	300mm
absorbent-diameter:	125mm
absorbent-material:	Polypropylene
absorbent-retrieval:	1m length retrieval cord
absorbent-capacity:	Hydrocarbon absorbent capacity of approximately 2 litres